

Marconi - Belmar Scrap Book



HOTEL AT MARCONI WIRELESS STATION, BELMAR, N.J.

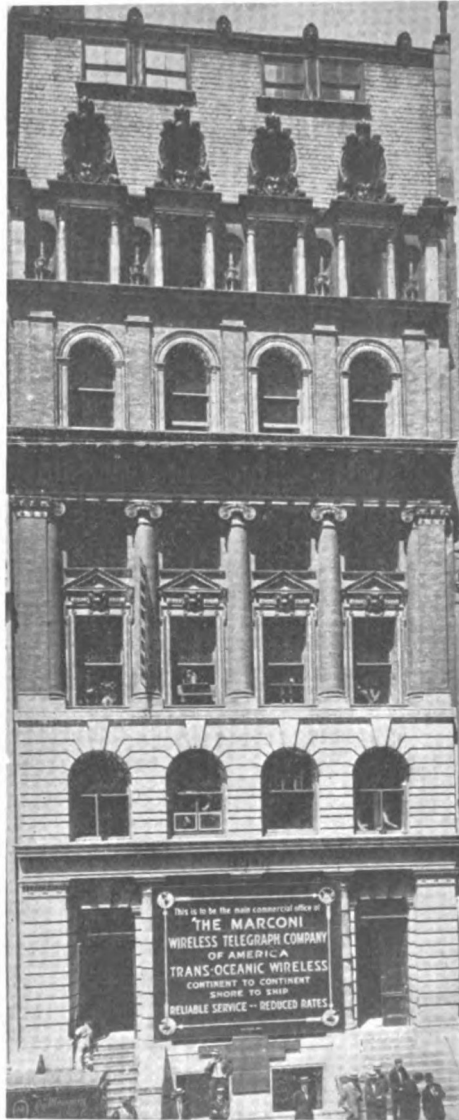
The New Jersey Antique Radio Clubs's
Radio Technology Museum

at

InfoAge



The Marconi High-Power Chain



Main Commercial Office in NYC Financial District, first floor, Wall Street Journal Office, on Broad Street, just down the block from the NY Stock Exchange. This location was connected to the receiver site in Belmar, NJ by telegraph lines.



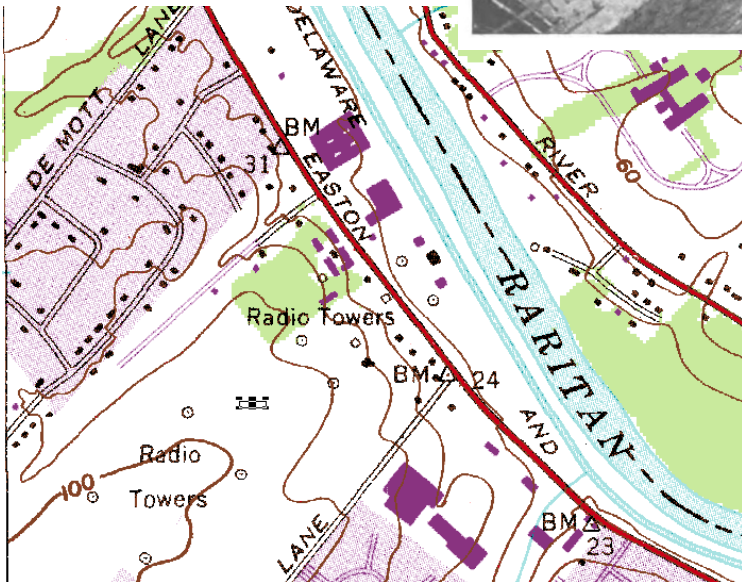
The Transmitter Site

New Brunswick, NJ



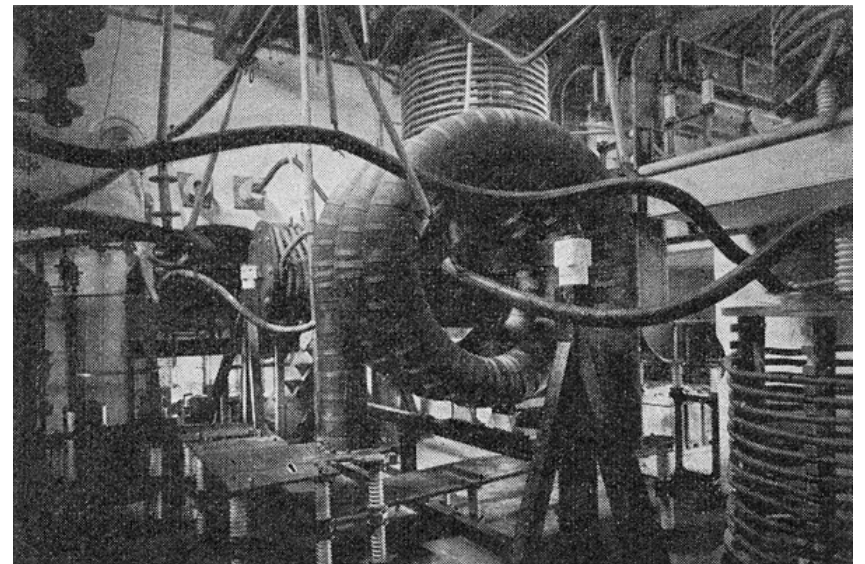
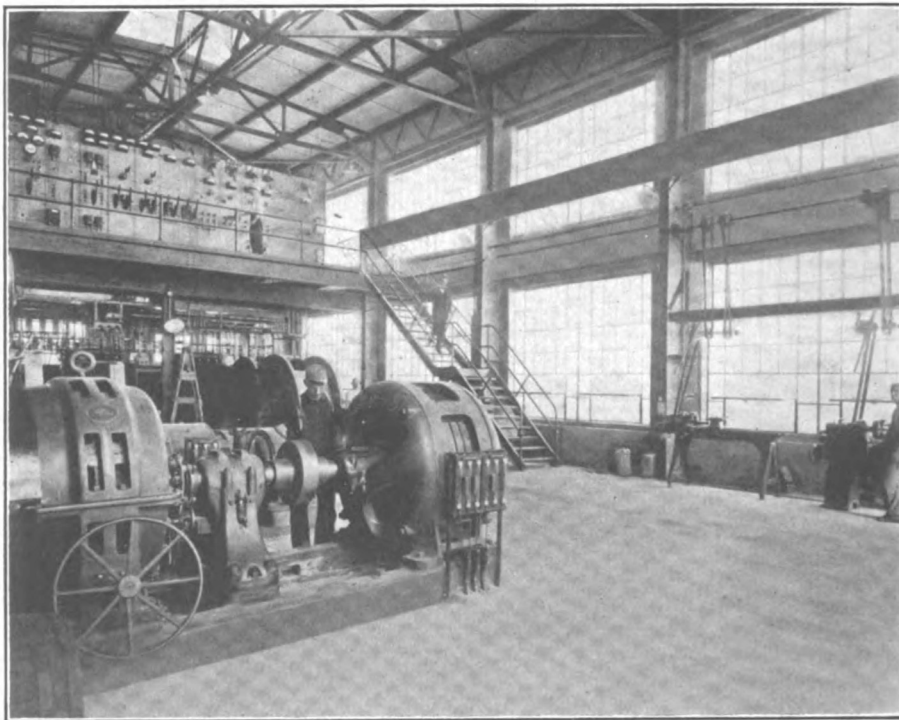
Transmitter Building “The Power House”

Input power to the rotary spark gap was 300 kilowatts.



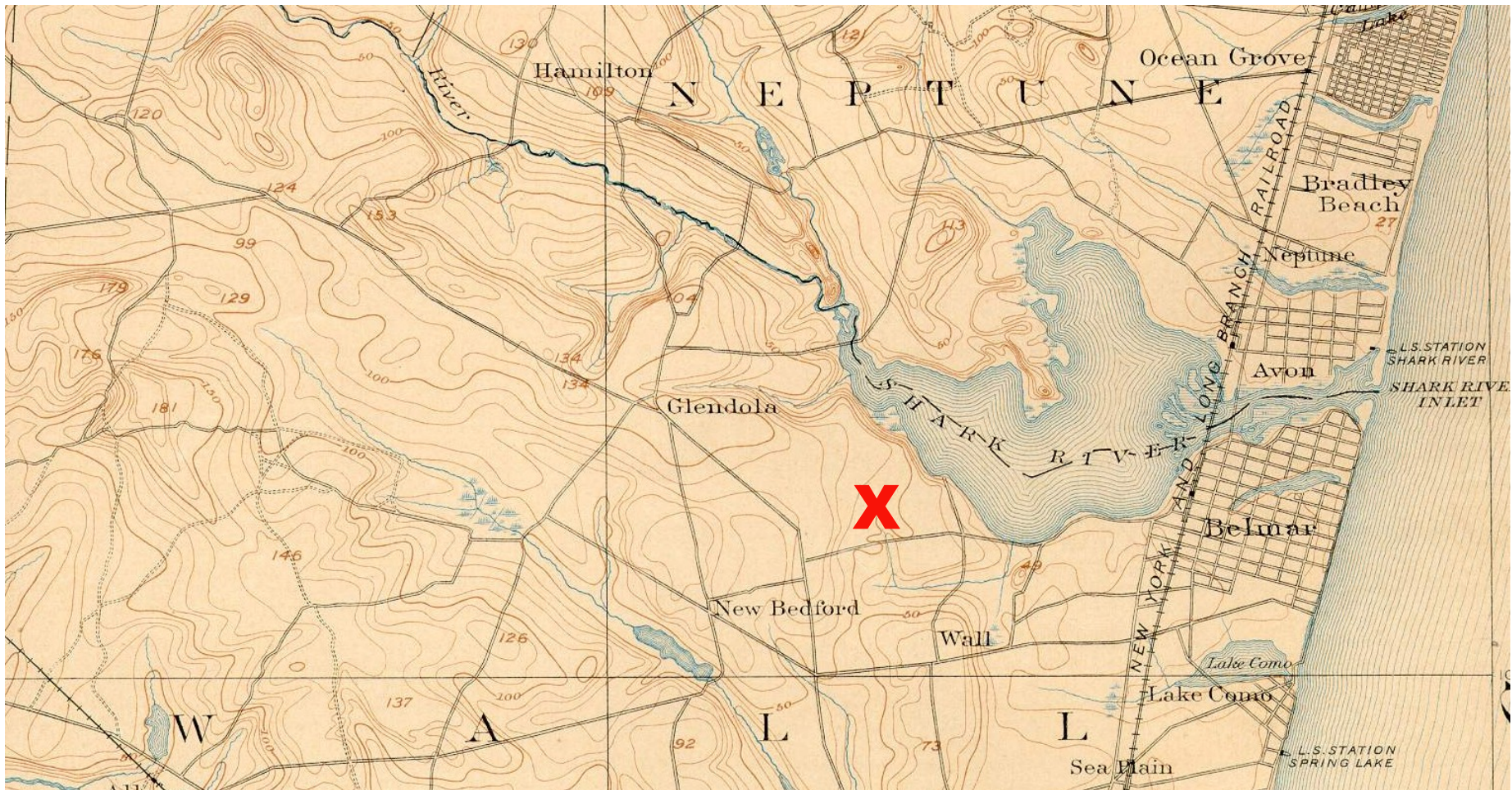


Mile-long Antenna Array



The Receiver Site

Belmar, NJ



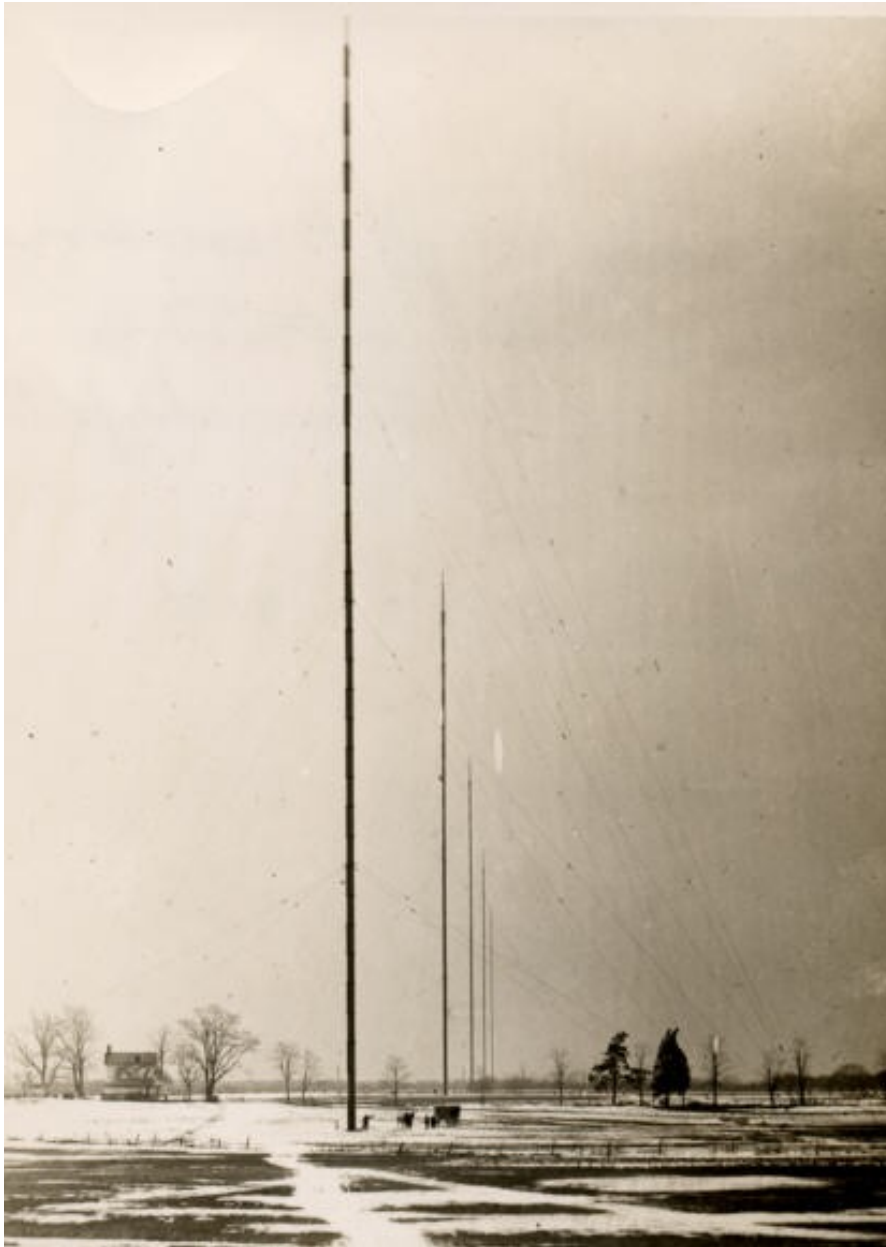
Location of receiver site near the Shark River Inlet in Wall Township, New Jersey. It took its name from the nearest town and railroad station, Belmar.



View of the station from the east side of the Shark River, ca. 1914. Operations building is at the water's edge, with mile-long main antenna behind it. One of the lattice work towers for the balancing-out antenna is visible behind the tree to the right. The "hotel," station manager's and chief engineers cottages, and the power plant are on the high ground.



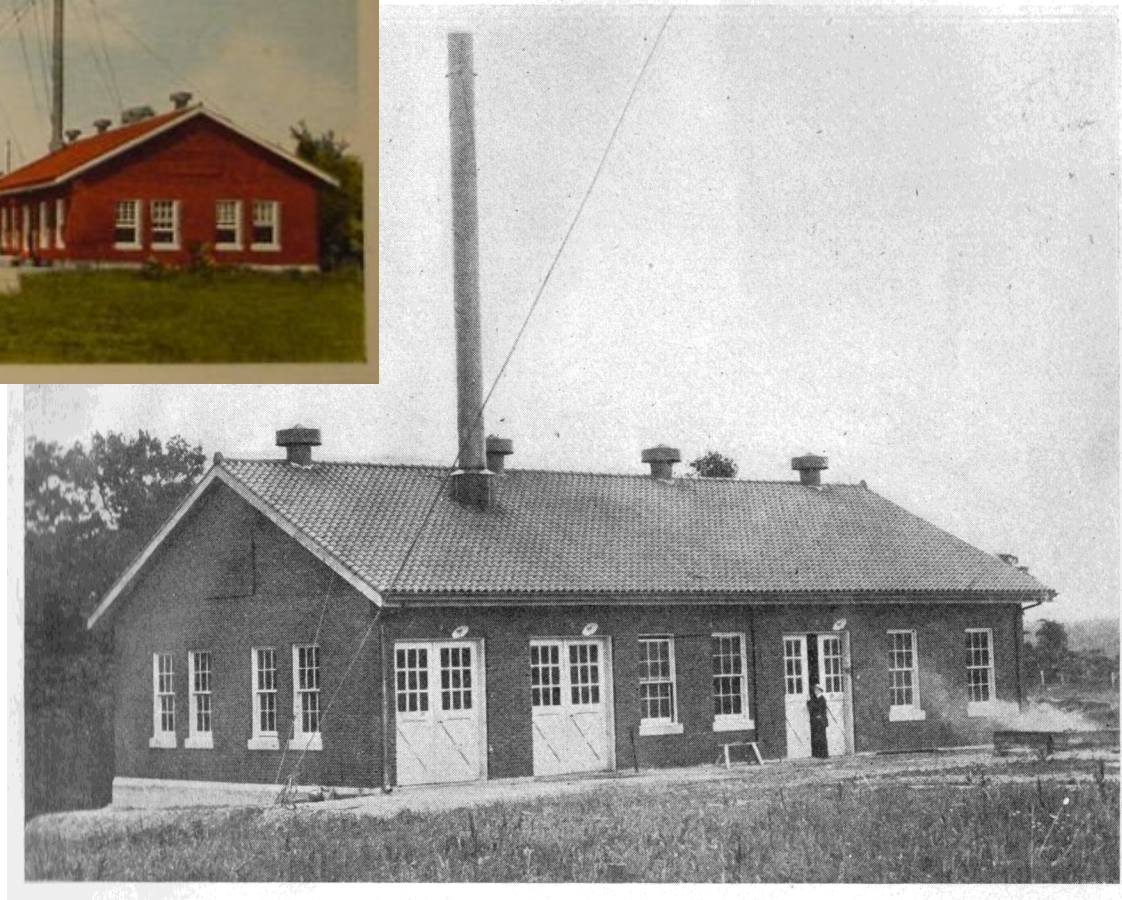
The operations building under construction. The construction shack in front of it is believed to be the locations of Edwin Armstrong's demonstration of his regenerative receiver to Marconi personnel on 30-31 January 1914.



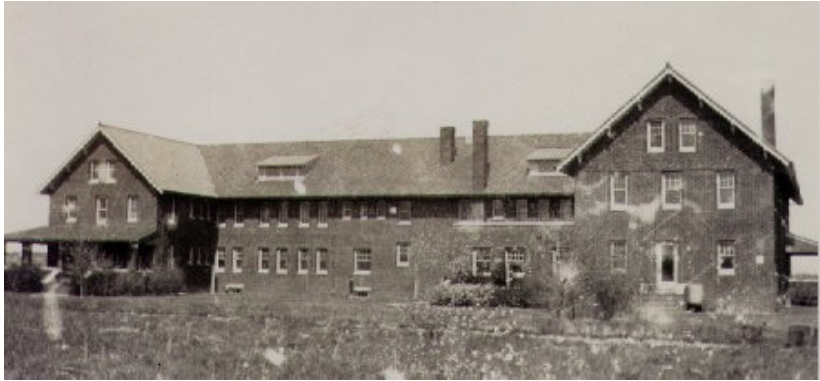
Construction of the 400-foot antenna masts. The array was a mile long. This was necessary to receive signals from the UK with a crystal set, a receiver that provided no amplification. All the energy that got to the listeners eardrum came from the transmitter.



Erecting the steel masts.



Antenna masts and power house shown on a vintage post card.



Hotel rear view



Marconi Road



The Cottages



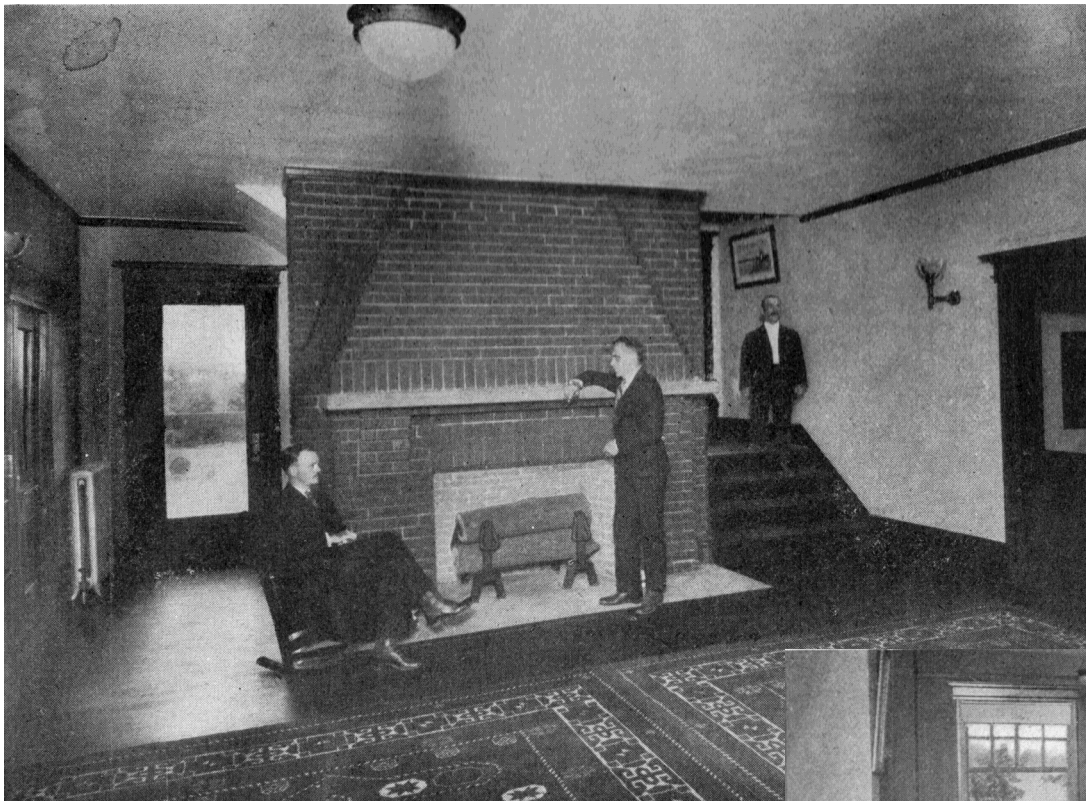
The Operations Building

The Hotel



For the comfort and convenience of the large staff of operators and engineers necessary to maintain the twenty-four-hour service at Belmar, the Marconi Company has erected the hotel shown in the above illustration. Built of dark red ornamental brick, with a lighter red tile roof, this fireproof structure is as handsome as any of the palatial summer resort hotels in the vicinity. It is a city block long and contains 45 bedrooms.

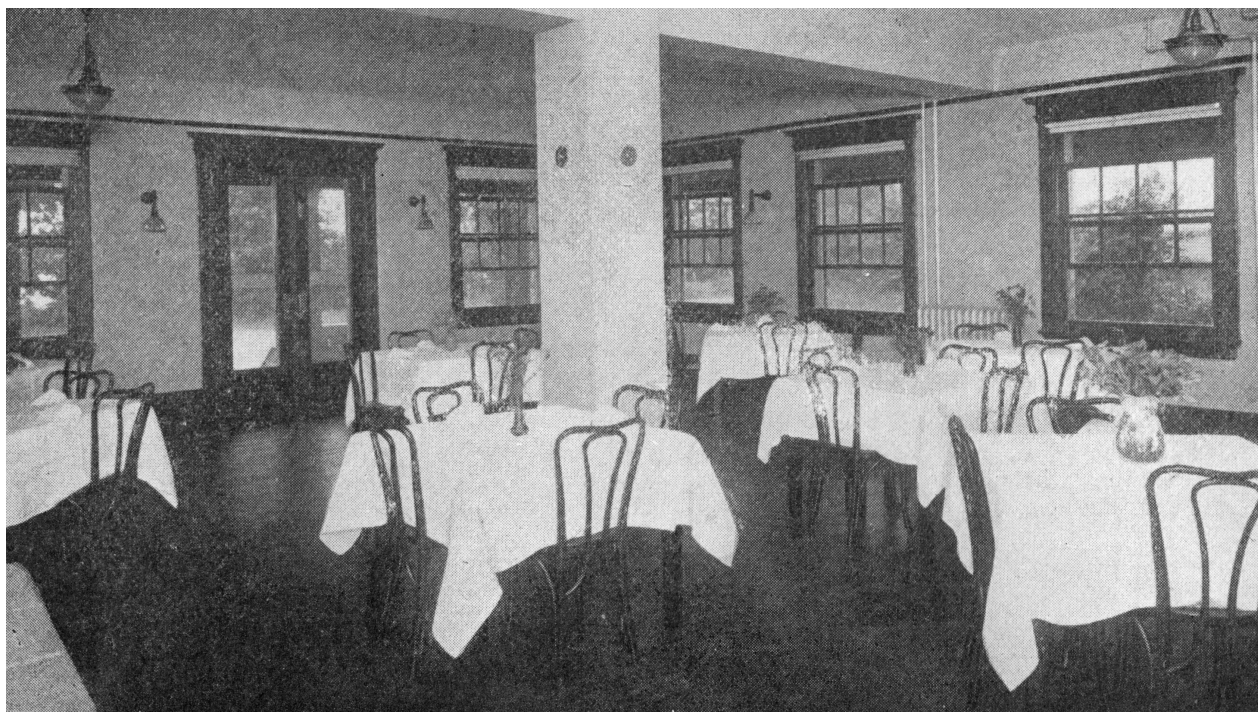
A series of pictures from Wireless Age, August 1914



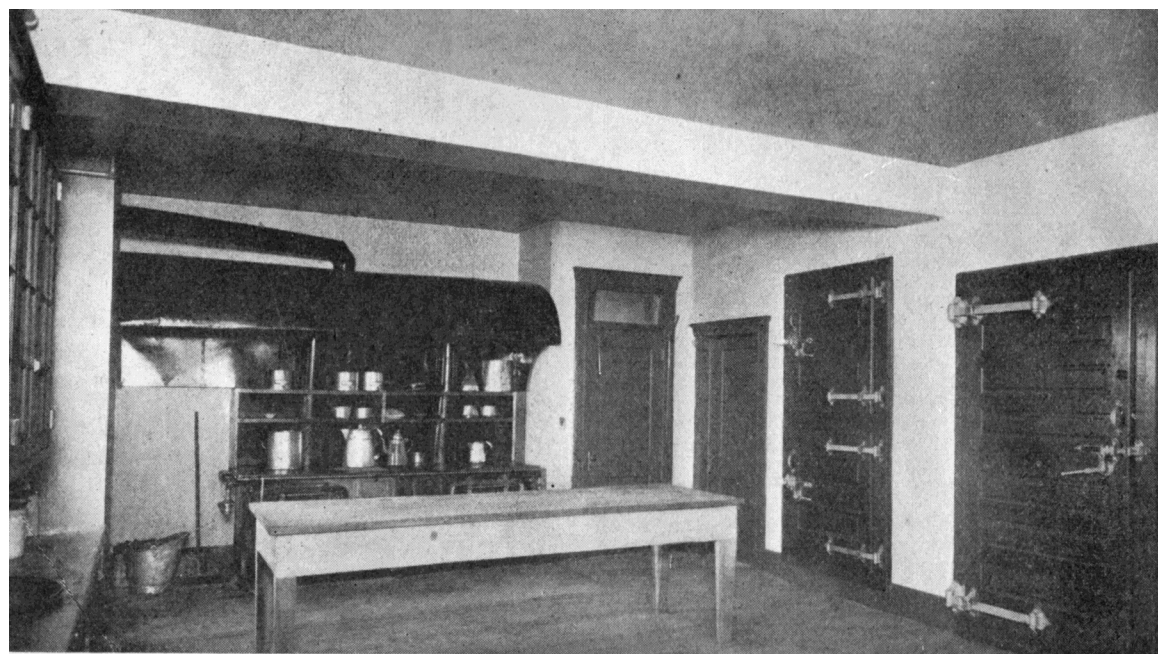
Hotel Lobby



Lounge



**Dining Room
And
Kitchen**





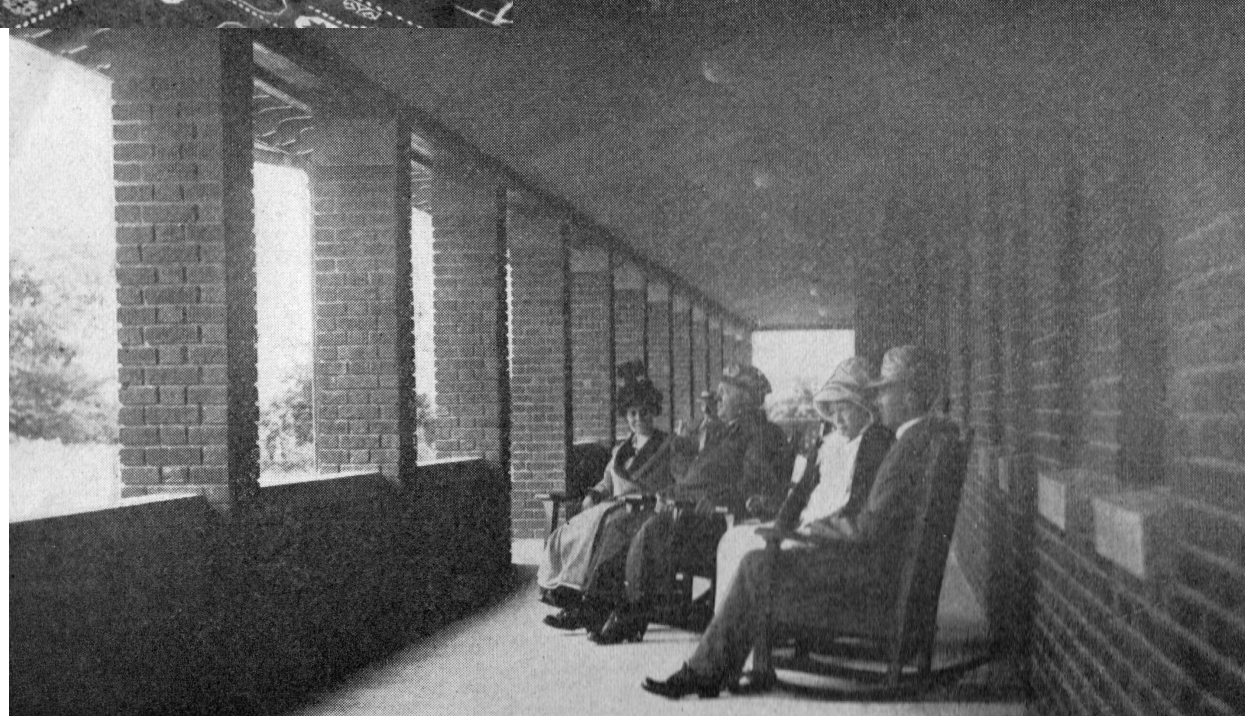
Typical employee accommodations.

Note Victrola in the corner of the sitting room.



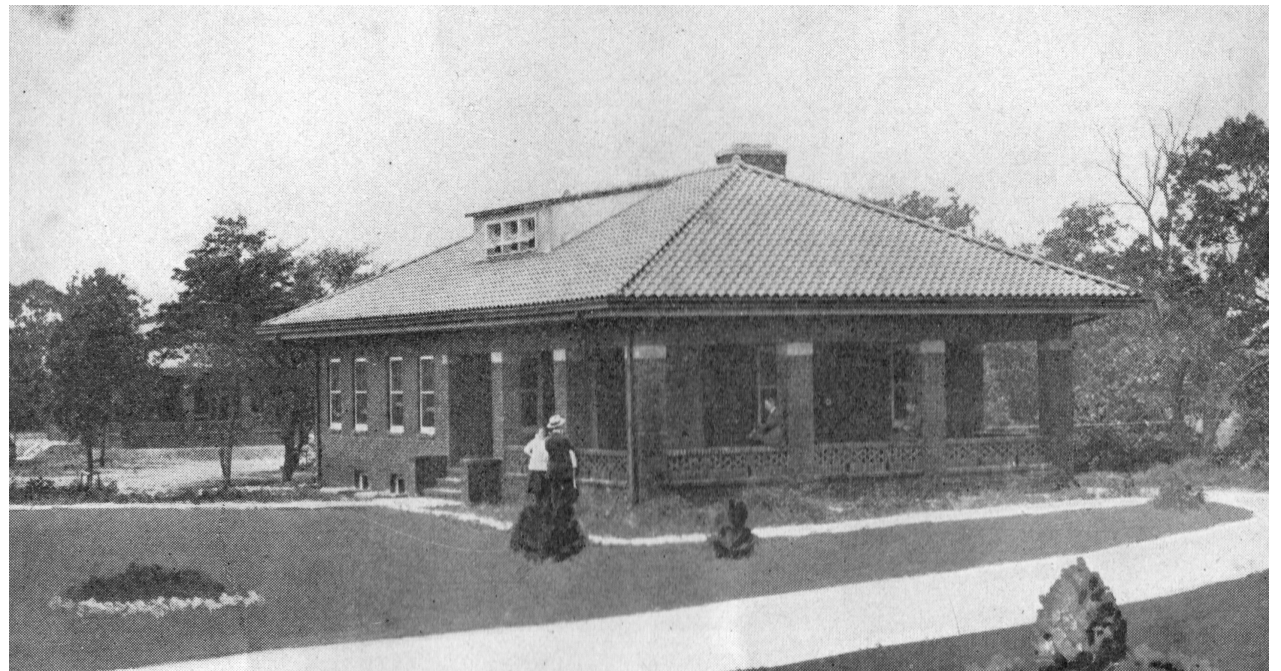


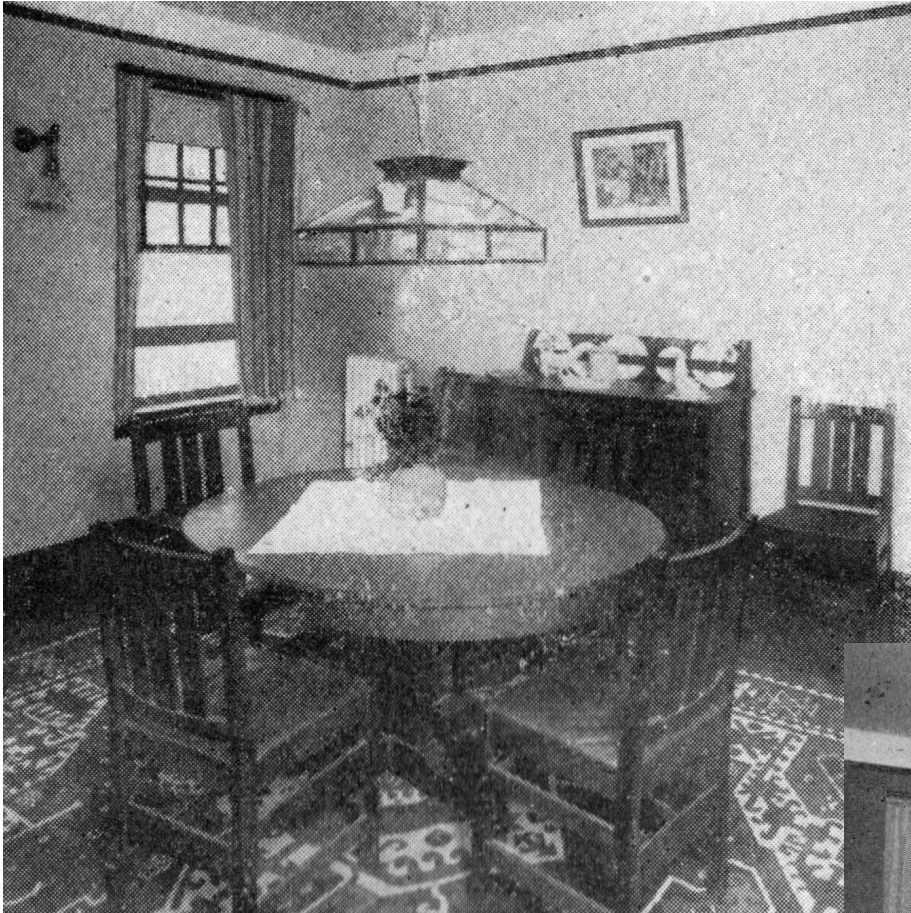
Station Managers Office





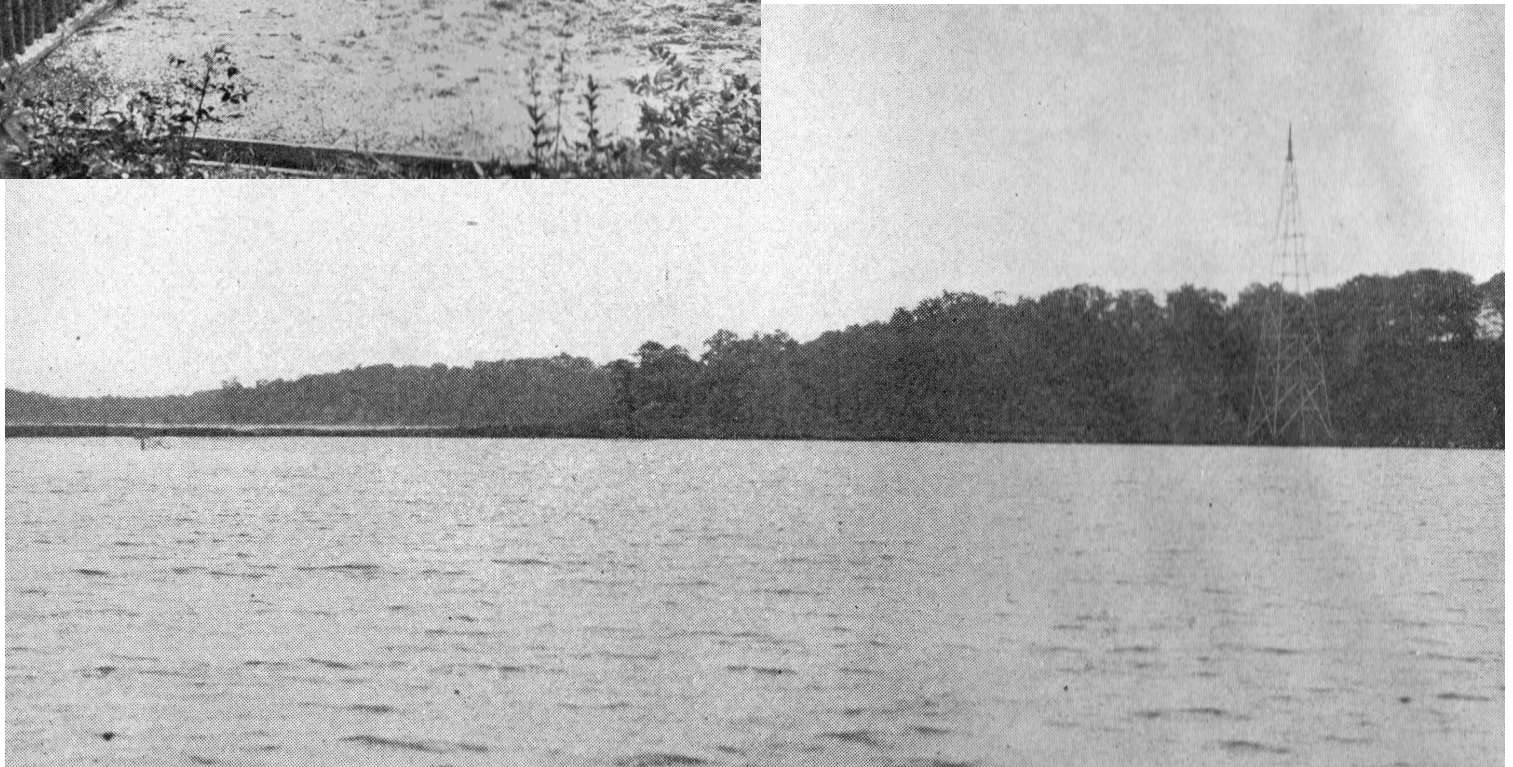
Comfortable Cottages for the Station Manager and Chief Engineer

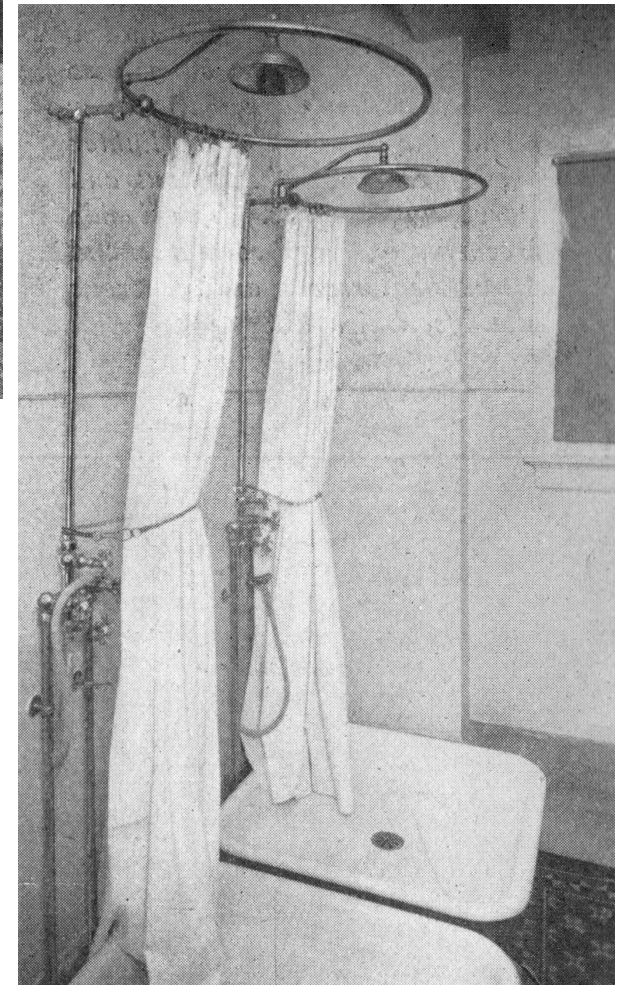




Cottage Interior

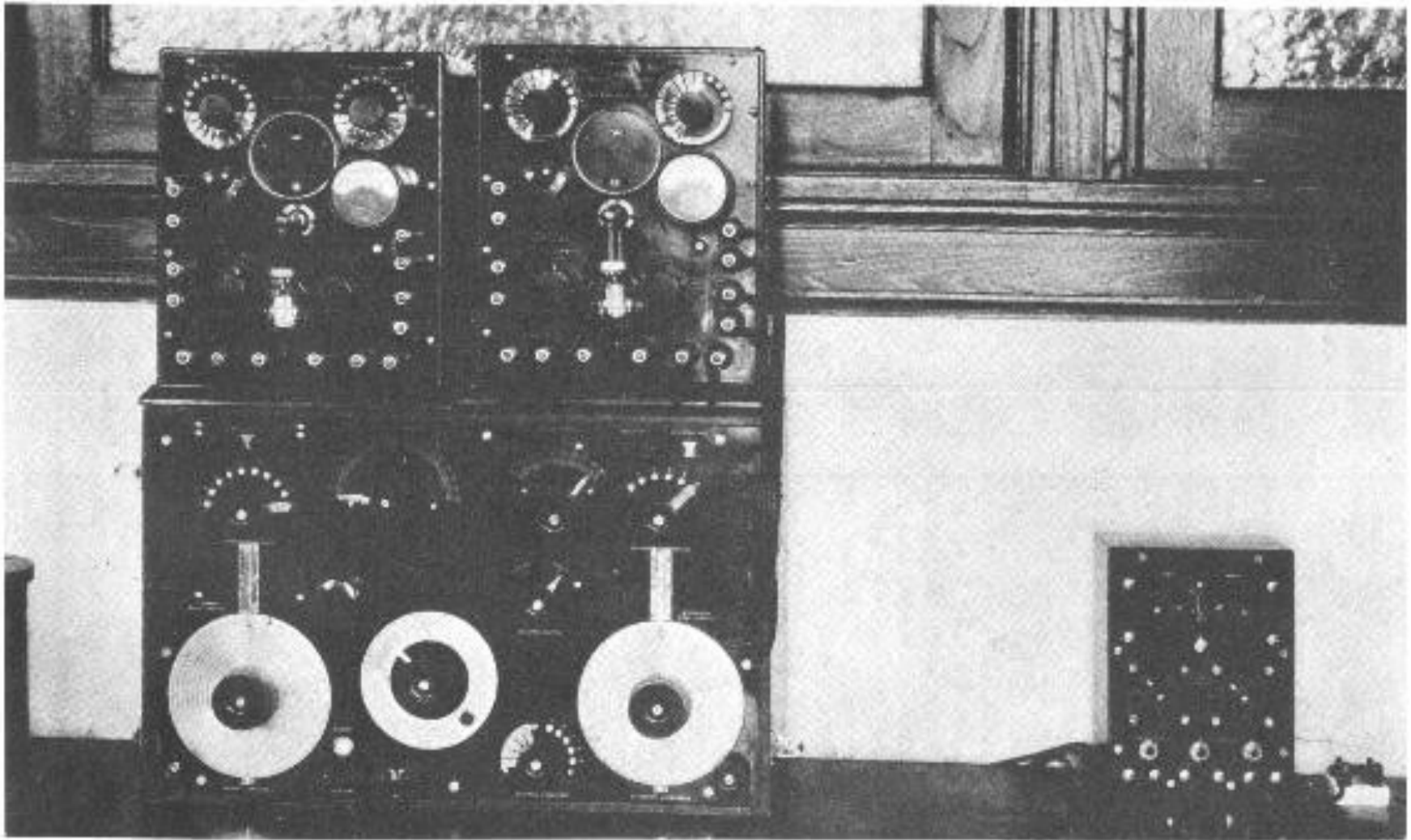








U.S. Navy Era 1917-1919



Standard Navy receiver, audion and amplifier, Radio Station, Belmar, N.J.

Similar equipment is on display in the Radio Technology Museum.

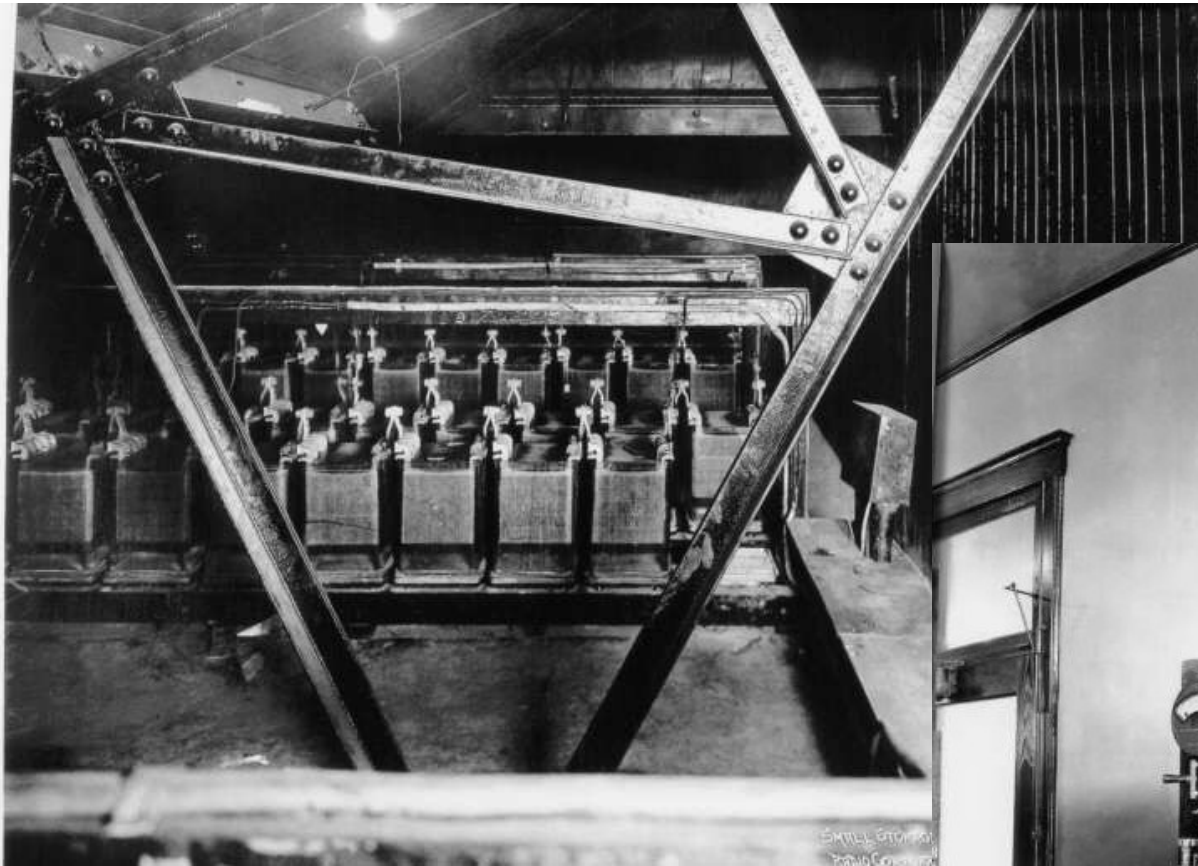
RCA Era circa 1920



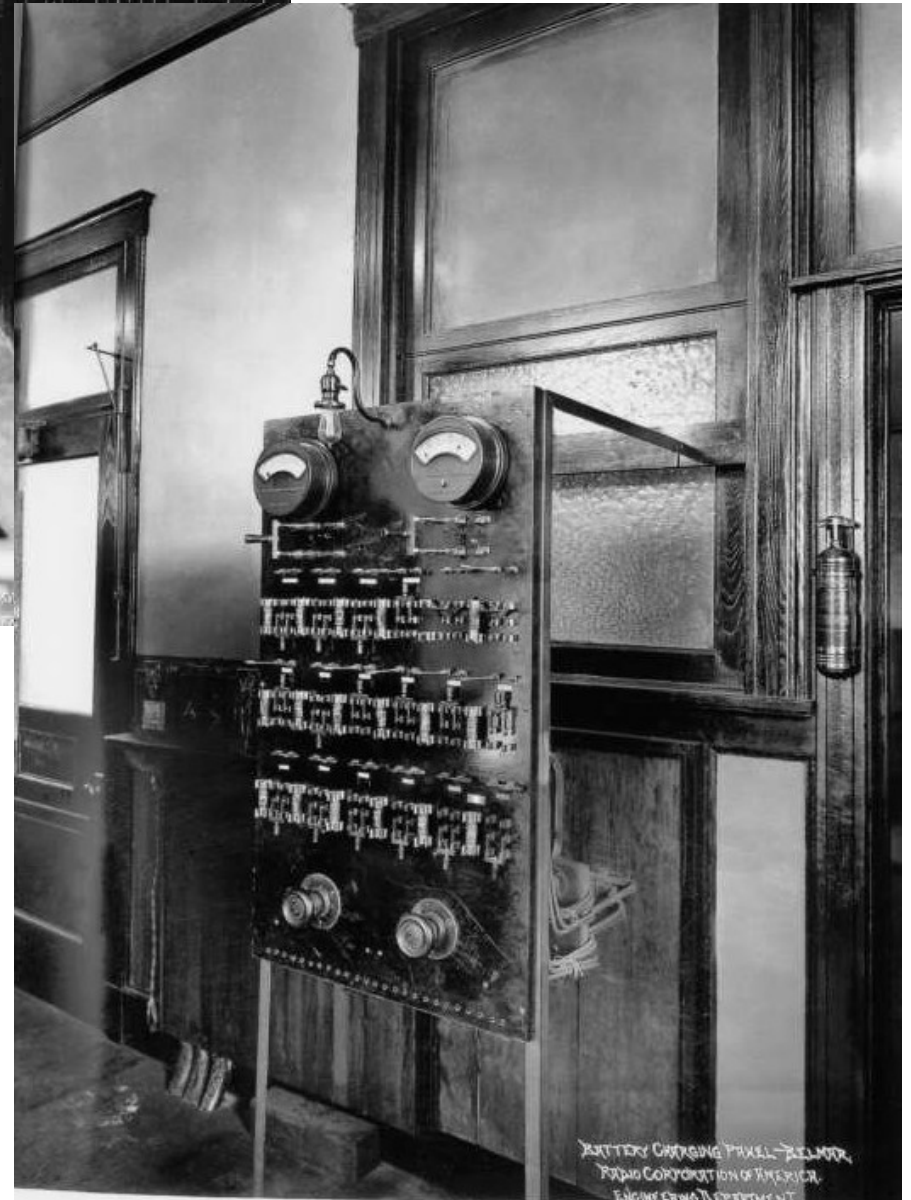
Belmar Operations Building pictures.





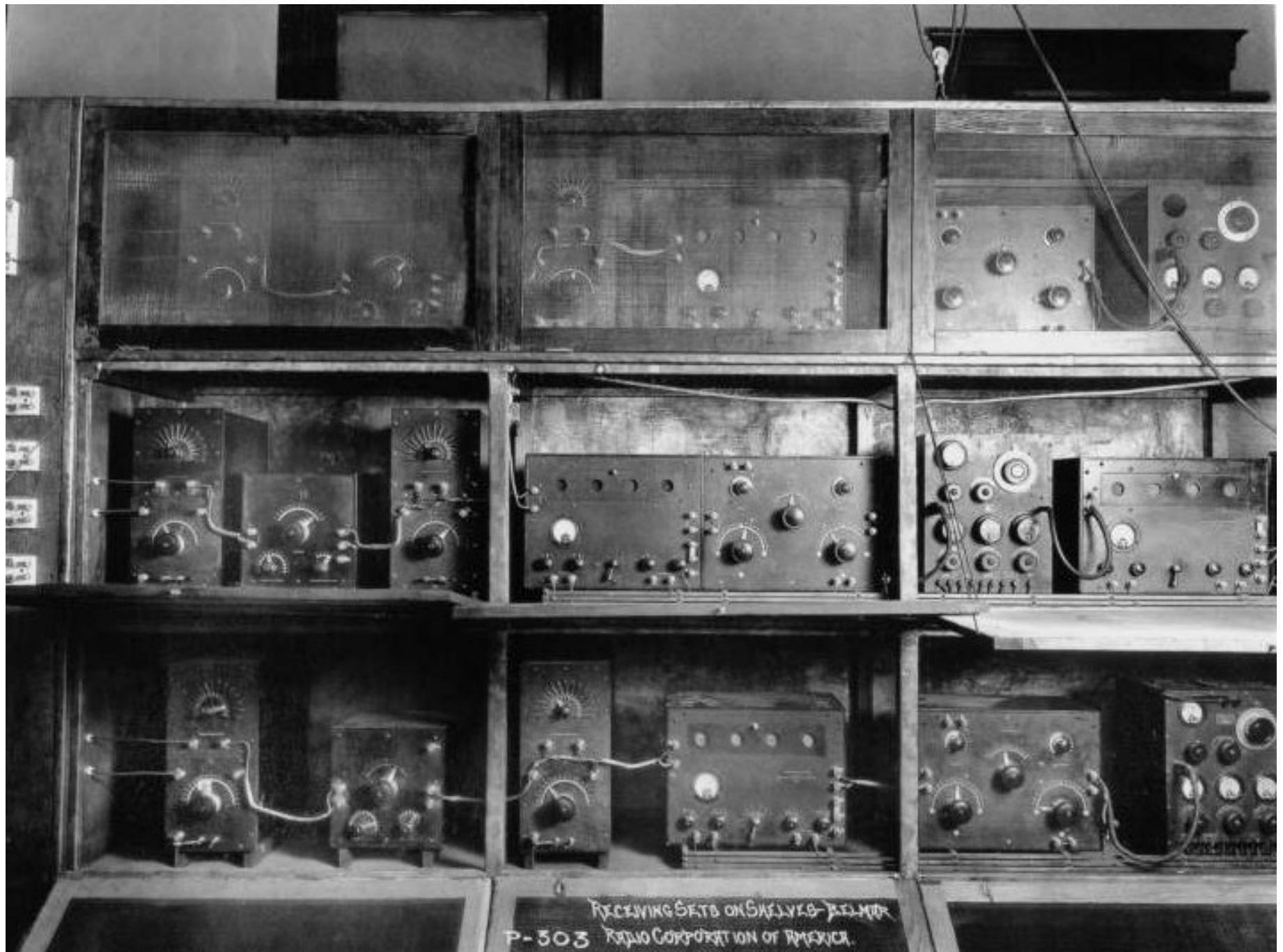


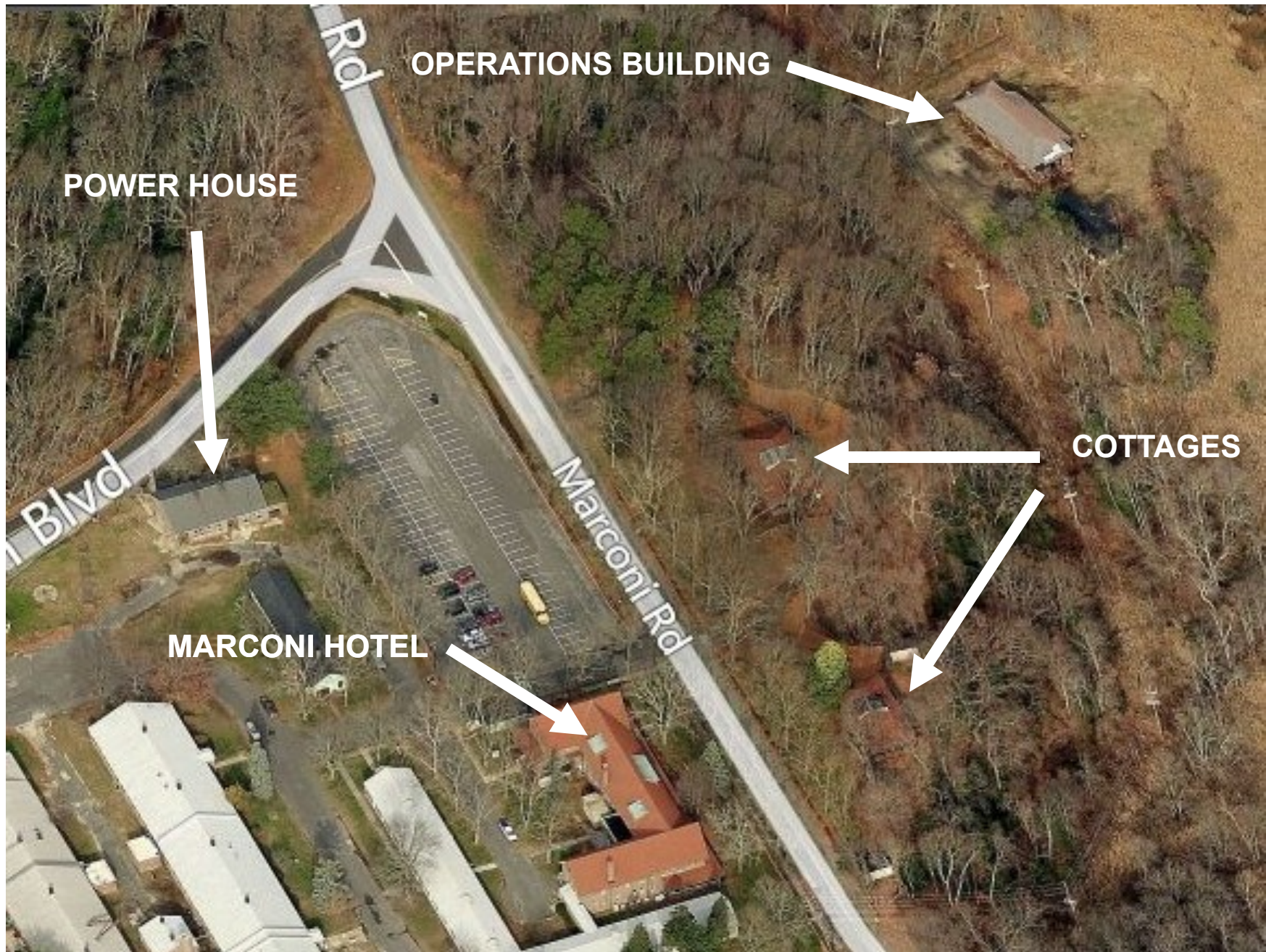
**Batteries (in attic)
and Charging Panel**





The Radio Receiving Shelves





Most of the Belmar Station still stands. We're working hard to preserve it.



**Marconi's daughter visited InfoAge in 2015.
Mike Ruane, Claire French, Princess Elettra Marconi Giovanelli , and Fred Carl**